

October Weaving Year of Wonder

**Marcy Petrini
October 18, 2021**

Katherine Claflin

Katherine's Scarf, Shadow Weave

From *Eight Shafts: A Place to Begin* (Shelp and Wostenberg). Threading 11, treading 5.64

Fiber: 8/2 Tencel in Birch and Gray Blue.

EPI: 16

Finished measurements: 13.5 in wide and 4.3 ft long.

Next time? More contrast between colors to show off the shadows.



Jeanne Marie Peet

Color and Weave Project

Six Placemats in Log Cabin Design

14" x 19" (final)

SETT: 14 epi;

3/2 Perle Cotton in Black and Natural

(Yarn Barn of Kansas)



Janet St Lawrence

Shadow Weave

Information not available



Sue Anne Sullivan (1)

Color and Weave log cabin kitchen towels I wove for a friend using the colors in her new kitchen- red, black, grey and white.

The inspiration for my design was the “Two Balls” draft from <http://www.theloomybin.com/loom/>.

I varied the treading with each towel. For warp and weft I used 6/2 Bluegrass cotton from the Woolery. EPI = 20. PPI= about 12.



Two Balls- rectangles- treadled as draft indicated

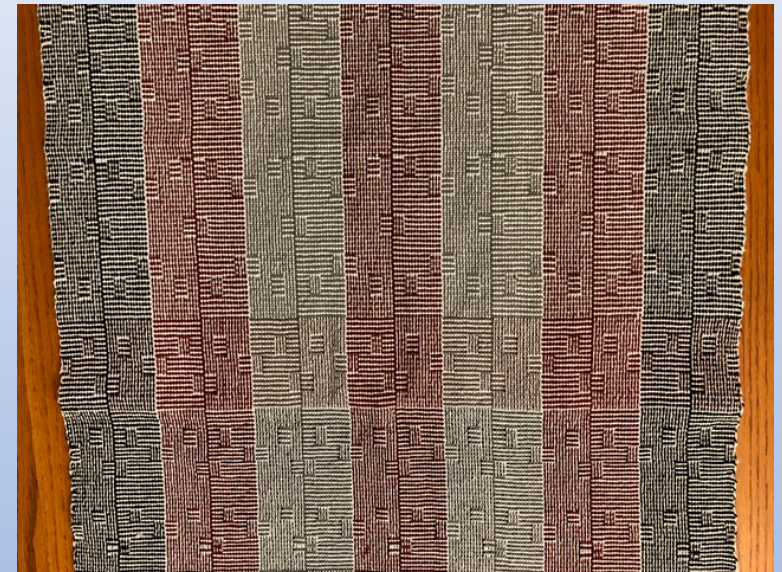
I played with treading to elongate the pattern



Sue Anne Sullivan (2)

I originally wanted to get a balanced weave but found it impossible to get a PPI of 20, so modified my designs accordingly.

I like the outcome pretty well but the Bluegrass 6/2 produces a somewhat sturdy/stiff fabric. The towels are not as fluffy and soft as towels similarly woven using the Caledonia Dye Works 6/2 yarn from Yarn Barn, which I have used with great results. I think if I use this Bluegrass 6/2 yarn again in the future I will use it for placemats, runners, etc.



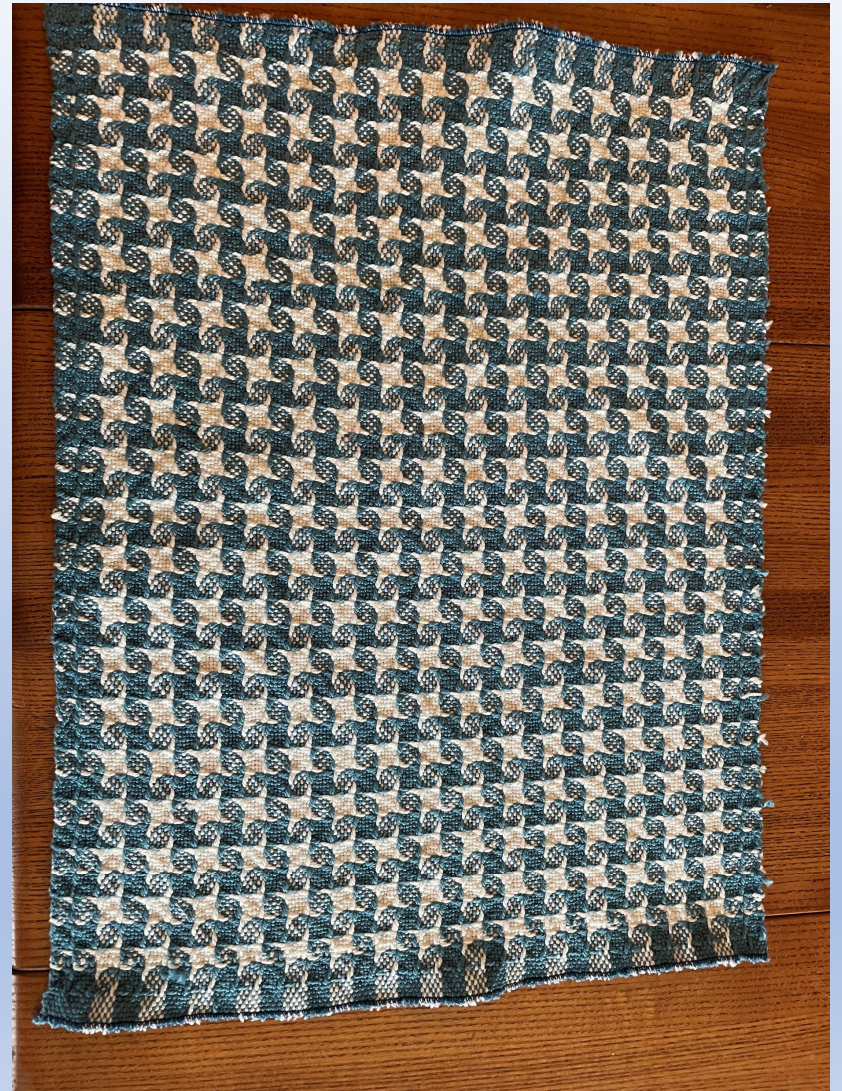
I played around with mixing up the pattern

Jim Coleman

A recent color and weave placemat done for a friend.

Thread is 5/2 cotton. This draft is one of the very first 8 shaft projects I ever completed.

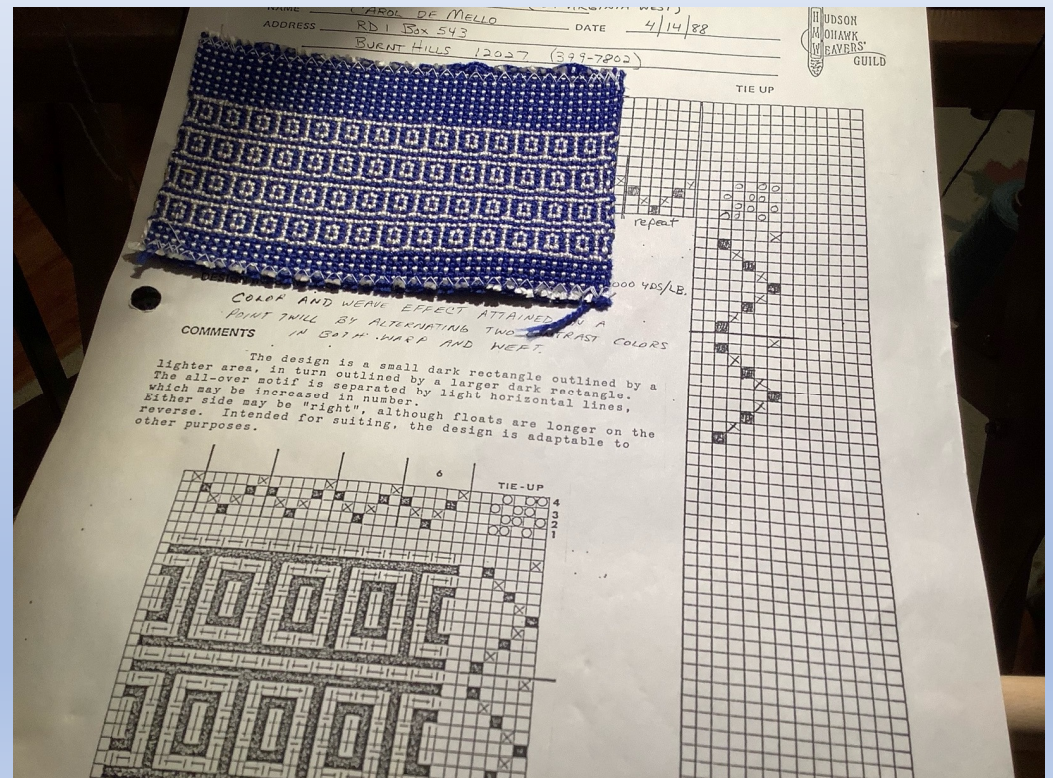
(Pin wheels can be done on 4 shafts as well, albeit simpler MP)



Trudi Jacobson (1)

I am working from a weaving record from a collection that I bought at a sale several years ago

It is done in 5/2 cotton (blue) and Henry's Attic Cascade (white)



Trudi Jacobson (2)

Mine is done in a wool lyocell blend and clearly what I have is the wrong yarn for it.

I am using W/LYO 2/10 for both colors but the blue is decidedly thicker than the purple.

I sett it at 18 epi for this twill. I had to dent it 2-1 in a Japanese 5 cm reed, and that caused no end of headaches with the threads getting twisted.



Debbie Cummings

Color and weave

Warp: 8/2 cotton - alternating gold and maroon

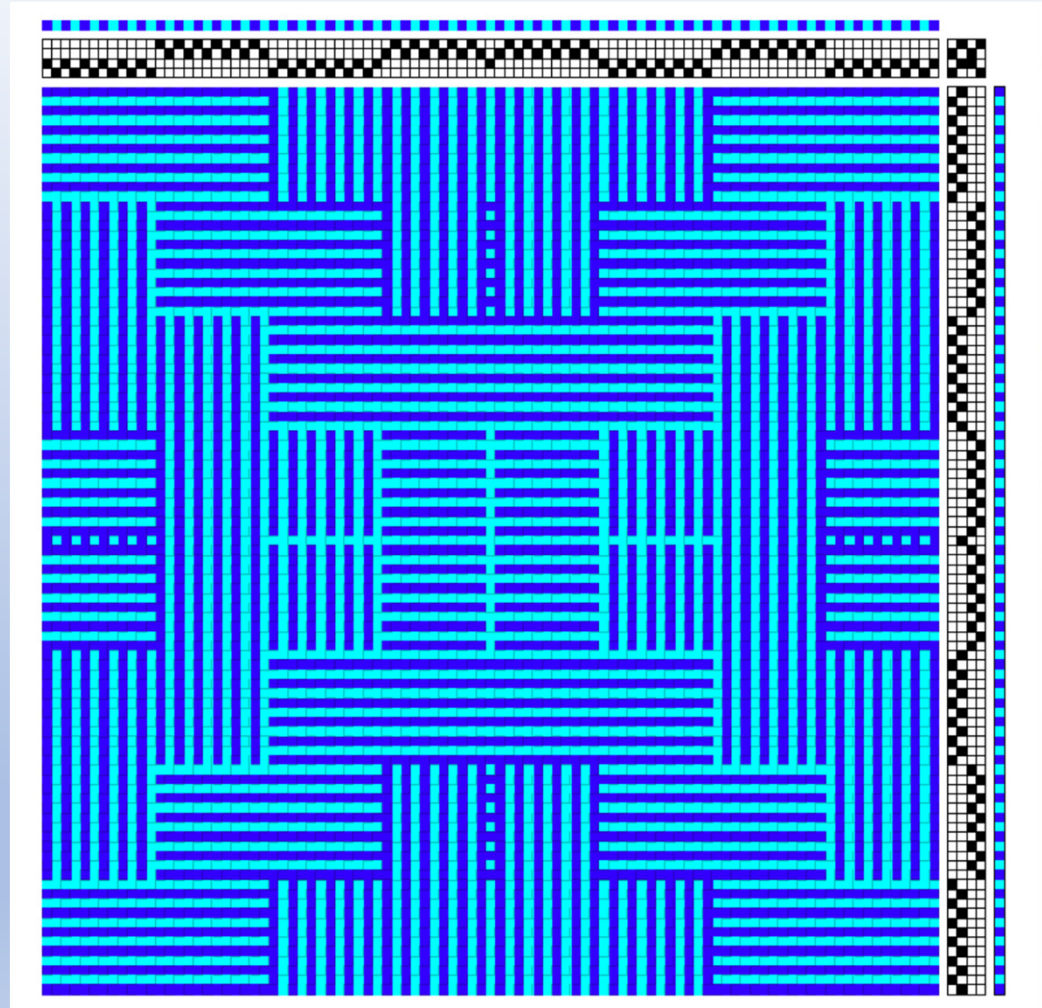
Weft: 8/2 cotton - alternating gold and maroon

EPI: 20; PPI: 19

I merged two threadings from Heddlecraft volume 1, Issue 3 May/June 2016 4-shaft Shadow Weave gamp. For my tea towels the middle threading (green and white threading in HC gamp) is bracketed by the purple and white Heddlecraft threading. The whole piece is treadled with the Heddlecraft green and white sequence.



Susan Mayo

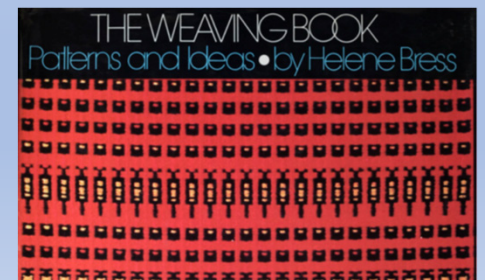


Beth Palmer
Log cabin scarf



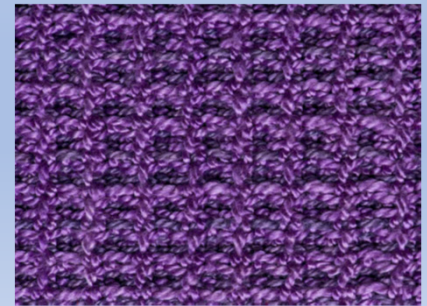
November Challenge: Treadling Methods

- Treadling Methods are treadling steps applied to a variety of weaving structures
- Weaving structures have a threading and at least one treadling associated with each, for example all of the twills
- Some structures have more than one treadling associated with them: summer and winter can be woven single and paired
- Treadling Methods do not have a threading



Treading Method Variations

- **Some treading methods are rather general, for example swivel**
- **Others can be applied to a class of structures, for example shadowy (not to be confused with shadow weave) is used on twills**
- **Others are even more specific: waffle is applied to pointed twills**
- **Some more familiar than others**



To Get Started

- Crepe Weave
- Echo Treadling Method
- Honeycomb
- On-Opposite Treadling Method
- Petit Point
- Popcorn Treadling Method
- Shadowy Treadling Method
- Sunburst Treadling Method
- Swivel
- Waffle Weave



On the Web



- **All of the structures listed in the previous slide are in the on-line Pictionary**
- **There is also a more complete description of Treading Methods with Helene Bress' reference**
- **And there is more... perhaps you will be find one not listed!**

P.S. Treadling Method or Not?

- **As already mentioned, there are two common ways to treadle summer and winter, singles and paired, which in turn can be X's or O's**
 - **Other unit weaves do not always have these options**
- **Overshot can be woven star fashion which is taw, but also rose, which some consider a treadling method, but it is not a traditional one**